

Everything You
Need to Know
About Your Stay





We look forward to welcoming you to our campus in New York, California, or Texas. The following information will help you get the most out of your time with us.

CONFIRMATION

Please take a moment to review your enrollment confirmation, which provides all the details for your class.

CHECK-IN

Hyde Park, NY

Check-in will take place at 6 a.m. for morning (a.m.) classes in the East Wing Dining Room on the first floor of the J. Willard Marriott Education Center. For afternoon (p.m.) classes, please report to the Continuing Education Lobby on the first floor of the J. Willard Marriott Education Center at 1:30 p.m. (see campus map on page 9).

St. Helena, CA

Check-in will take place 30 minutes prior to the start time of your class. Please report to the concierge area in the Atrium on the first floor of the main building (see campus map on page 10).

San Antonio, TX

Check-in will take place 20 minutes prior to the start time of your program in the reception area of the CIA San Antonio in Building 2 on the Pearl Brewery site (see map on page 11).

TOOLS

Basic tools will be available in the kitchen for use during class. If, however, you would prefer to use your own tools, you are welcome to do so.

You may purchase one of our CIA Masters Collection® knife kits at special prices exclusively for CIA continuing education students.

The Premier Package

- 8" Chef's Knife
- 10" Slicing Knife
- 3½" Paring Knife
- Sharpening Steel
- 14" Wooden Stirring Spoon
- Chef's Spatula
- 12" Flexible Balloon Whisk
- Peeler
- Bench Scraper
- 10" Offset Metal Spatula
- Locking Tongs
- 6-Piece Measuring Spoon Set
- Digital Instant-Read Thermometer
- Cutlery Use and Care Booklet
- Backpack with Travel Cutlery Roll

Retail price: \$507

Exclusive CIA price: \$425

The Starter Package

- 7" Santoku Knife
- 3½" Paring Knife
- 6" Boning Knife

Retail price: \$195

Exclusive CIA price: \$155

To order either tool kit, call 1-800-888-7850 at least three weeks prior to the class start date. You will receive your kit when you check in for class.

UNIFORM CODE

To foster a professional working environment and to maintain the highest standards of safety and sanitation, the CIA has adopted the following uniform codes:

For hands-on cooking or baking and pastry courses

- A uniform consisting of a white chef's jacket and checkered pants must be worn in production classes. For safety and sanitation reasons, jewelry is not permitted except for one plain ring and one watch. Note: Chef's hat, apron, and a side towel will be provided for all production courses.
- Shoes worn during food production courses should be made of firm leather, with low heels and no open toes. Socks must be worn; nylon hosiery is prohibited.
- Hair should be neatly maintained, clean, and under control at all times. Long hair should be pinned up and worn under a hair net. Chef's hats will be provided upon arrival.

For management and wine classes, including Career Discovery—The Professional World of Wine

- Business-casual attire out of respect for the academic and professional atmosphere of the campus. Blue jeans, shorts, tank tops, and open-toed sandals are not permitted.
- Many wine classes include field trips to wineries and vineyards; plan to wear low-heeled, sturdy shoes and clothes suitable for cool mornings and hot afternoons.



COMMUNICATION DEVICES

All communication devices (e.g., cell phones, BlackBerries, laptops) are prohibited in our kitchens. Please excuse yourself from production to handle important personal matters. Such devices should be set to silent or vibrate mode during lecture so as to avoid disturbing the class.

SMOKING POLICY

Health and fire safety laws—as well as campus regulations—prohibit smoking in all indoor areas, in outdoor areas not specifically designated for smoking, and within 75 feet of all building entrances.

Smokers are asked to use the outdoor locations specifically designated for smoking. In the spirit of hospitality and concern for the comfort of all who study and work at the CIA, smoking is permitted only in designated areas.

Fines will be levied against anyone in violation of this policy. To help keep the campus clean, we ask that you use the ash urns provided and refrain from disposing of cigarette butts on the ground or floor.

PHOTOGRAPHY

Periodically, photographers will be on campus to take photographs that may be used in CIA advertising, publications, or on our website. As a condition of your enrollment, you grant The Culinary Institute of America the right to reproduce, use, exhibit, display, broadcast, distribute, and create derivative works of college-related photographs or videotapes that include your image for use in promoting, publicizing, or explaining the college and its activities. If you don't want your image used by the CIA in this way, please inform customer service.

PREFERRED PRICING

While at the CIA, you're entitled to a 10% discount in our student-staffed public restaurants. We suggest you make lunch or dinner reservations before you arrive on campus. Continuing education students also receive 10% off most items and 15% off wine books at the Spice Islands Marketplace at our St. Helena, CA campus.

ON-CAMPUS RESTAURANTS

Hyde Park, NY

Reservations: 845-471-6608 or
www.ciachef.edu/restaurants

American Bounty Restaurant

The wealth and diversity of foods of the Americas is brought to life by the Bounty's imaginative cuisine. A recipient of the prestigious Ivy Award, it features regional specialties prepared with ingredients from the Hudson Valley and beyond.

Escoffier Restaurant

The cuisine of this Ivy Award-winning restaurant spans the culinary traditions of France, from rustic Provençal to sophisticated Parisian, but with a contemporary touch.

Ristorante Caterina de' Medici

The Ivy Award-winning "Caterina" features seasonal ingredients and authentic dishes of Italy in a magnificent Tuscan villa setting.

St. Andrew's Café

This award-winning restaurant exemplifies the best of the farm-to-fork movement, highlighting locally and sustainably sourced ingredients prepared using both American and European culinary traditions.

Apple Pie Bakery Café

Showcasing the talents of our baking and pastry students, the Ivy Award-winning bakery café offers sumptuous baked goods and café cuisine in a relaxed atmosphere. No reservations necessary at the bakery café.

St. Helena, CA

Reservations: 707-967-1010 or
www.ciachef.edu/restaurants

Wine Spectator Greystone Restaurant

Inspired by local, seasonal ingredients, this Ivy Award-winning restaurant's menu features a bold interpretation of world flavors. Terrace dining with spectacular vineyard views is available in season.

San Antonio, TX

Phone: 210-554-6464
www.ciachef.edu/texas/ciabakerycafe.asp

CIA Bakery Café

Overlooking the college's teaching kitchen, the bakery café offers a variety of light fare, including soups, salads, and sandwiches, as well as classic pastries prepared with specialty items from Latin America.

STUDENT RECREATION CENTER

Hyde Park, NY

Be sure to visit the Student Recreation Center when you're on campus. Take a swim, work out in the weight room, or play some basketball and racquetball. You can also eat in the Courtside Café and Pub or enjoy evening events.

There is an ATM in the Center. **Please note: Your name tag is required for entrance into the building.**

Building Hours:

Monday–Thursday, 7 a.m.–midnight

Friday, 7 a.m.–10 p.m.

Saturday, 9 a.m.–10 p.m.

Sunday, 9 a.m.–11 p.m.

Pool Hours:

Monday–Thursday, 10 a.m.–1 p.m. & 3–11 p.m.

Friday, 10 a.m.–1 p.m. & 3–9:30 p.m.

Saturday, 10 a.m.–7 p.m.

Sunday, 11 a.m.–9:30 p.m.

Courtside Café Hours:

Monday–Thursday, 11 a.m.–10 p.m.

Friday, 11 a.m.–9:30 p.m.

Saturday–Sunday, 9 a.m.–9:30 p.m.

HEALTH SERVICES

Hyde Park, NY

The Health Services Office is located on the ground floor of Roth Hall. Nurses' hours are Monday through Friday, 7 a.m.–8:45 p.m. A nurse practitioner is available from 9 a.m.–2:30 p.m. on Tuesdays and Thursdays.

You will be responsible for the cost of any medical office visits, house calls, emergency room visits, hospitalization, and medication.



CAMPUS STORE

Hyde Park, NY

Located on the first floor of Roth Hall, the Craig Claiborne Bookstore offers culinary tools and more than 1,300 culinary titles. Call 1-800-677-6266.

Hours:

Monday, 10 a.m.–4 p.m.

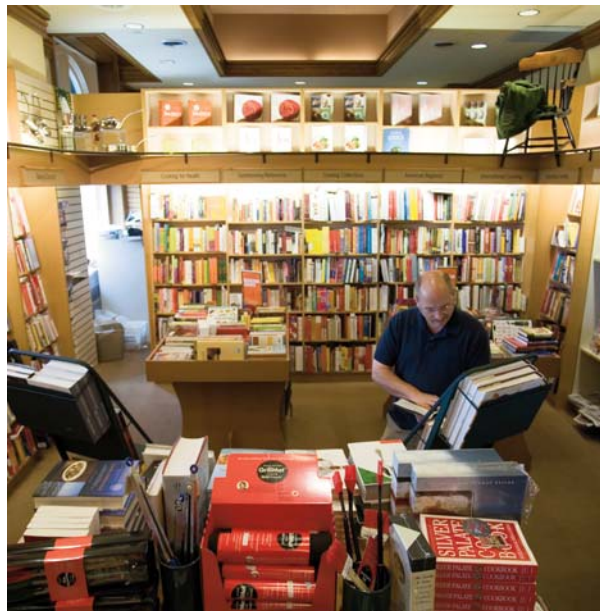
Tuesday–Friday, 10 a.m.–7 p.m.

Saturday, 11 a.m.–7 p.m.

St. Helena, CA

The Spice Islands Marketplace offers an impressive array of kitchen equipment, tools, cookware, and bakeware, along with wine-related items, more than 1,700 cookbook titles, and unique food items from the Napa Valley and around the world. Call 1-888-424-2433.

Hours: 10:30 a.m.–6 p.m. daily



LIBRARY

Hyde Park, NY

The Conrad N. Hilton Library houses one of the largest culinary collections in the country, with nearly 84,000 volumes, along with current periodicals, a file of contemporary menus, and a collection of rare books. You can call the library at 845-451-1747.

Library Hours:

Monday–Thursday, 7:30 a.m.–11 p.m.

Friday, 7:30 a.m.–5 p.m.

Saturday, 10 a.m.–5 p.m.

Sunday, noon–11 p.m.

Video Center Hours:

Monday–Thursday, 8:30 a.m.–10 p.m.

Friday, 8:30 a.m.–5 p.m.

Saturday, noon–5 p.m.

Sunday, noon–8 p.m.

Computer Center Hours:

Monday–Thursday, 8 a.m.–11 p.m.

Friday, 8 a.m.–5 p.m.

Saturday, 10 a.m.–5 p.m.

Sunday, noon–11 p.m.

St. Helena, CA

The Margie Schubert Library is located on the third floor of the main Greystone building. Through a special arrangement, students may also borrow books from the St. Helena Public Library, which has an outstanding collection on wines. Resources are also available from the Conrad N. Hilton Library in Hyde Park. Computer labs providing printing capabilities and wireless Internet access are located on the third floor of the main Greystone building and at the Rudd Center for Professional Wine Studies.

Library Hours: Monday–Friday, 6:30 a.m.–10 p.m.

Computer Lab Hours: Monday–Friday, 6 a.m.–10 p.m.

San Antonio, TX

Located on the third floor of the main building, the San Antonio campus library includes approximately 1,500 titles, along with nearly 1,300 square feet of study space. Resources can also be accessed from the Conrad N. Hilton Library in Hyde Park. In addition, nine computer workstations with printing capability are available for student use.

Library Hours: Monday–Friday, 8 a.m.–5 p.m.

CAMPUS PARKING

Hyde Park, NY

You may park in the lower level of the Anton Plaza parking garage. Please see the campus map on page 9.

St. Helena, CA

Parking is available in designated areas on campus. Please refer to the campus map on page 10.

San Antonio, TX

Parking is available throughout the Pearl Brewery site. There are no parking places specifically designated for students.

CAR RENTAL DISCOUNT

A discount is available from Avis Rent-A-Car for students in the CIA's professional development programs. Call 1-800-331-1600 and mention Avis Worldwide Discount (AWD) code B834999.

ON-CAMPUS SHORT-TERM HOUSING

A limited number of short-term housing units are available at Greystone's Guest House and Vineyard Lodge Housing Center. Rooms are reserved on a first-come, first-served basis as available. Please contact our student affairs manager at 707-967-2420 for more information regarding availability.



CANCELLATIONS OR CHANGES

The CIA reserves the right to cancel or limit the size of any class and to alter its curriculum, course dates, instructor assignments, tuition, fees, and policies. Occasionally, enrollment for a course is low and it becomes necessary for us to cancel the course. We apologize for any inconvenience a cancellation may cause and will make every effort to reschedule the course or make other arrangements for you. In addition, the CIA reserves the right to alter course times (from a.m. to p.m. or vice versa) up to three weeks before the class start date. We suggest you make travel arrangements after you have received your course confirmation.

TUITION REFUND POLICY

For all continuing education programs, full tuition is due at the time of registration. If your employer or a third party will be paying for your course, full tuition is still required at this time.

Tuition refunds will be based on the date of official withdrawal through the Continuing Education Registration System. You may be eligible for a partial or full refund based on the following schedule:

Date of Withdrawal Refund

At least 15 days prior to start date

Full refund

14 days or less prior to start date

We'd be happy to transfer you to another date; however, no refunds will be available.

If you have any questions, contact our customer service team at 1-800-888-7850.



LOCAL ACCOMMODATIONS

Many of the hotels in the area offer discounts to CIA continuing education students. Be sure to inquire when making your reservation. Please note that external sites are not endorsed by The Culinary Institute of America; these listings are provided solely for your convenience.

Hyde Park, NY

The following accommodations are located within 13 miles of the CIA campus.

Beekman Arms

Route 9, Rhinebeck, 1-800-361-6517, 845-876-7077

Best Western Inn & Conference Center

2170 South Road (Route 9), Poughkeepsie,
1-800-528-1234, 845-462-4600

Courtyard by Marriott

2641 South Road (Route 9), Poughkeepsie,
1-800-321-2211, 845-485-6336

Hampton Inn & Suites

2361 South Road (Route 9), Poughkeepsie,
845-463-7500

Holiday Inn Express

2750 South Road (Route 9), Poughkeepsie,
1-800-HOLIDAY, 845-473-1151

Inn at the Falls

50 Red Oaks Mill Road, Poughkeepsie,
1-800-344-1466, 845-462-5770

Journey Inn Bed & Breakfast

1 Sherwood Place, Hyde Park, 845-229-8972

Quality Inn

4142 Albany Post Road, Hyde Park, 845-229-0088

Residence Inn by Marriott

2525 South Road (Route 9), Poughkeepsie,
1-800-331-3131, 845-463-4343

St. Helena, CA

The following lodgings are all located in St. Helena, CA.

El Bonita Motel

195 Main Street, 1-800-541-3284

Harvest Inn

One Main Street, 1-800-950-8466

Hotel St. Helena

1309 Main Street, 1-888-478-4355

The Inn at Southbridge

1020 Main Street, 707-967-9400

Meadowood Resort

900 Meadowood Lane, 1-800-458-8080

Vineyard Country Inn

201 Main Street, 707-963-1000

Wine Country Inn

1152 Lodi Lane, 707-963-7077

San Antonio, TX

The following accommodations are located in San Antonio, TX within 10 miles of the CIA.

Aloft San Antonio Airport

838 NW Loop 410, 1-877-462-5638, 210-541-8881

El Tropicano Riverwalk Hotel

110 Lexington Avenue, 1-800-972-3480, 210-223-9461

Hotel Contessa

306 W. Market Street, 210-229-9222

Hotel Valencia Riverwalk

150 East Houston Street, 1-866-842-0111, 210-227-9700

Marriott TownePlace Suites San Antonio Downtown

409 E. Houston Street, 210-271-3444

Omni La Mansión del Rio

112 College Street, 210-518-1000

Sheraton Gunter Hotel

205 East Houston Street, 210-554-1788

The Westin Riverwalk, San Antonio

420 West Market Street,
1-877-999-3223, 210-224-6500

A SAMPLING OF NAPA VALLEY WINERIES

Artesa Winery/707-224-1668

1345 Henry Road, Napa; Open daily, 10 a.m.–5 p.m.

Beaulieu Vineyard/707-967-5200

1960 St. Helena Highway, Rutherford

Open daily, 10 a.m.–5 p.m.

Beringer Vineyards/707-963-4812

2000 Main Street, St. Helena

Open daily, 9:30 a.m.–5:30 p.m. (summer),

9:30 a.m.–5 p.m. (winter)

Cakebread Cellars/707-963-5221

8300 St. Helena Highway, Rutherford

Open daily, 10 a.m.–4 p.m.

Caymus Vineyards/707-967-3010

8700 Conn Creek Road, Rutherford

Open daily, 10 a.m.–4:30 p.m. Call for an appointment.

Charles Krug Winery/707-967-2200

2800 St. Helena Highway, St. Helena

Open daily, 10:30 a.m.–5:30 p.m.

Chateau Montelena/707-942-5105

1429 Tubbs Lane, Calistoga; Open daily, 10 a.m.–4 p.m.

Chimney Rock Winery/707-257-2641

5350 Silverado Trail, Napa; Open daily, 10 a.m.–5 p.m.

Cliff Lede Vineyards/707-944-8642

1473 Yountville Crossroad, Yountville

Open daily, 10 a.m.–5 p.m.

Clos Du Val/707-259-2200

5330 Silverado Trail, Napa; Open daily, 10 a.m.–5 p.m.

Clos Pegase/707-942-4981

1060 Dunaweal Lane, Calistoga

Open daily, 10:30 a.m.–5 p.m.

Domaine Carneros/707-257-0101

1240 Duhig Road, Napa; Open daily, 10:30 a.m.–6 p.m.

Domaine Chandon/707-944-2280

One California Drive, Yountville

Open daily, 10 a.m.–6:30 p.m.

Franciscan Estates/707-967-3830

1178 Galleron Road, Rutherford

Open daily, 10 a.m.–5 p.m.

Freemark Abbey Winery/707-963-9694

3022 St. Helena Highway, St. Helena

Open daily, 10 a.m.–4:30 p.m.

Hall Winery/707-967-2620

401 St. Helena Highway South, St. Helena

Open daily, 10 a.m.–5:30 p.m.

Heitz Wine Cellars/707-963-3542

436 St. Helena Highway South, St. Helena

Open daily, 11 a.m.–4:30 p.m.

Hess Collection Winery/707-255-1144

4411 Redwood Road, Napa; Open daily, 10 a.m.–4 p.m.

Louis Martini Winery/707-968-3361

254 St. Helena Highway South, St. Helena

Open daily, 10 a.m.–4:30 p.m.

Markham Vineyards/707-963-5292

2812 N. St. Helena Highway, St. Helena

Open daily, 10 a.m.–5 p.m.

Merryvale Vineyards/707-963-7777

1000 Main Street, St. Helena

Open daily, 10 a.m.–6:30 p.m.

Mumm Napa Valley/707-967-7700

8445 Silverado Trail, Rutherford

Open daily, 10 a.m.–5 p.m.

Opus One/707-944-9442

7900 St. Helena Highway, Oakville

Open daily, 10:30 a.m.–3:30 p.m.

Robert Mondavi Winery/707-968-2001

7801 St. Helena Highway, Oakville

Open daily, 9 a.m.–5 p.m.

Rubicon Estate/707-968-1100

1991 St. Helena Highway, Rutherford

Open daily, 10 a.m.–5 p.m.

Schramsberg Vineyards/707-942-2414

1400 Schramsberg Road, Calistoga

Open daily, 10 a.m.–4 p.m. by appointment

Silver Oak Cellars/707-944-8808

915 Oakville Crossroad, Oakville

Open 9 a.m.–4 p.m., (Mon.–Sat.)

St. Clement Vineyards/1-800-331-8266

2867 St. Helena Highway North, St. Helena

Open daily, 10 a.m.–4 p.m.

St. Supéry Vineyards/707-963-4533

8440 St. Helena Highway, Rutherford

Open daily, 9:30 a.m.–6 p.m.

Sterling Vineyards/707-942-3344

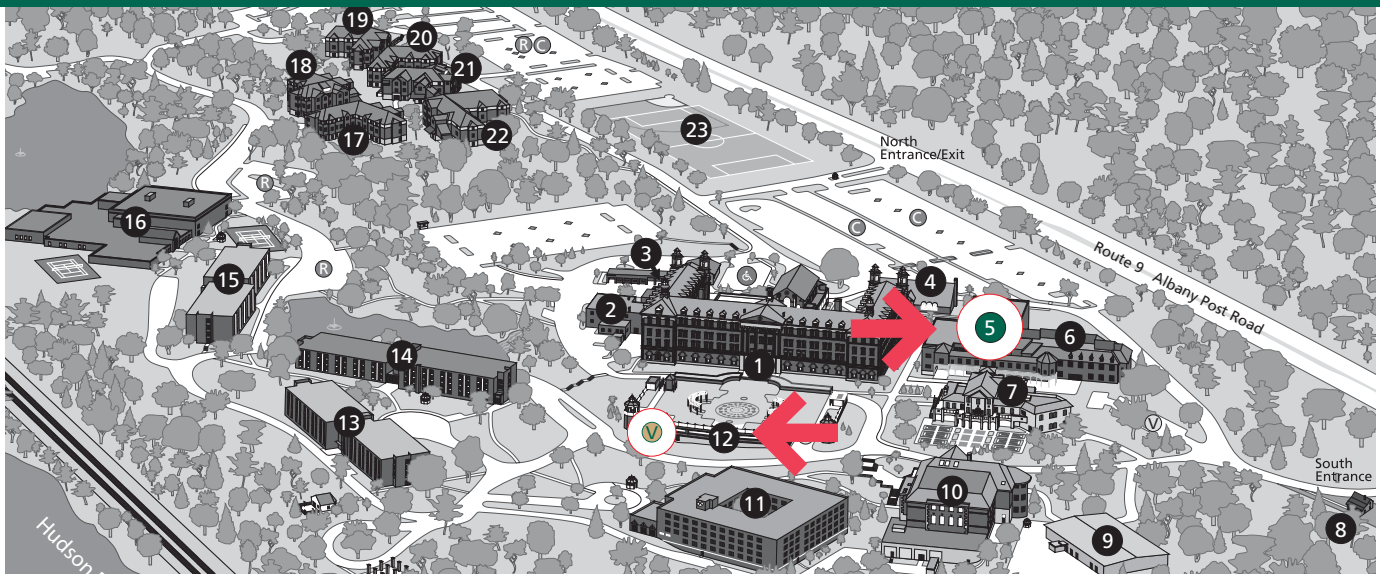
1111 Dunaweal Lane, Calistoga

Open daily, 10:30 a.m.–4:30 p.m.

Sutter Home Winery/707-963-3104

277 St. Helena Highway South, St. Helena

Open daily, 10 a.m.–5 p.m.



HYDE PARK, NY CAMPUS MAP

- 1 Roth Hall (*American Bounty and Escoffier Restaurants, the Apple Pie Bakery Café, and the Craig Claiborne Bookstore*)
- 2 Facilities Maintenance
- 3 Campus Safety Building
- 4 General Foods Nutrition Center (*St. Andrew's Café*)
- 5 J. Willard Marriott Education Center/Shunsuke Takaki School of Baking and Pastry**
- 6 Admissions Center (*Ecolab Theatre*)
- 7 The Colavita Center for Italian Food and Wine (*Ristorante Caterina de' Medici*)
- 8 Our Lady of the Way Chapel
- 9 McCann Education Annex
- 10 Conrad N. Hilton Library (*Danny Kaye Theatre*)
- 11 Hudson Residence Hall
- 12 Anton Plaza**
- 13 Katharine Angell Residence Hall
- 14 Pick/Herndon Residence Hall
- 15 Jacob Rosenthal Residence Hall
- 16 Student Recreation Center (*Courtside Café and Pub*)
- 17 Cinnamon Lodge (*Residence Hall*)
- 18 Juniper Lodge (*Residence Hall*)
- 19 Cayenne Lodge (*Residence Hall*)
- 20 Ginger Lodge (*Residence Hall*)
- 21 Clove Lodge (*Residence Hall*)
- 22 Nutmeg Lodge (*Residence Hall*)
- 23 Soccer/Softball Field

Check-in will take place in the J. Willard Marriott Education Center **(5 on the map)** on the first day of your class. You may park in the lower level of the Anton Plaza parking garage **(12 on the map)**.

Parking Information:

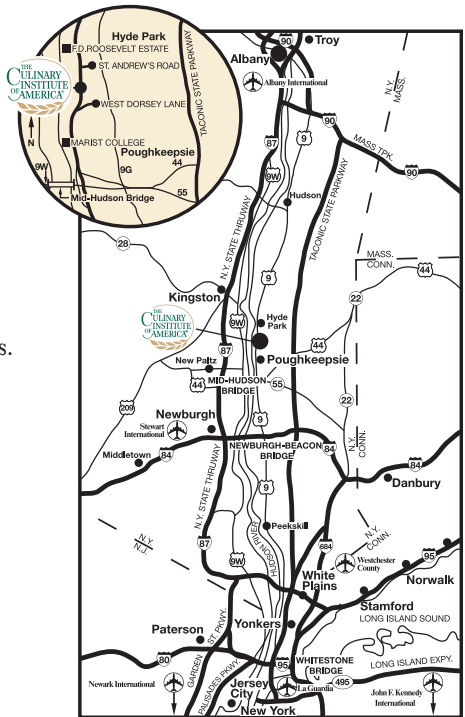
- V** Visitor/Guest Parking
- R** Resident Student Parking
- C** Commuter Student Parking
- ♿** Accessible Parking Lot *

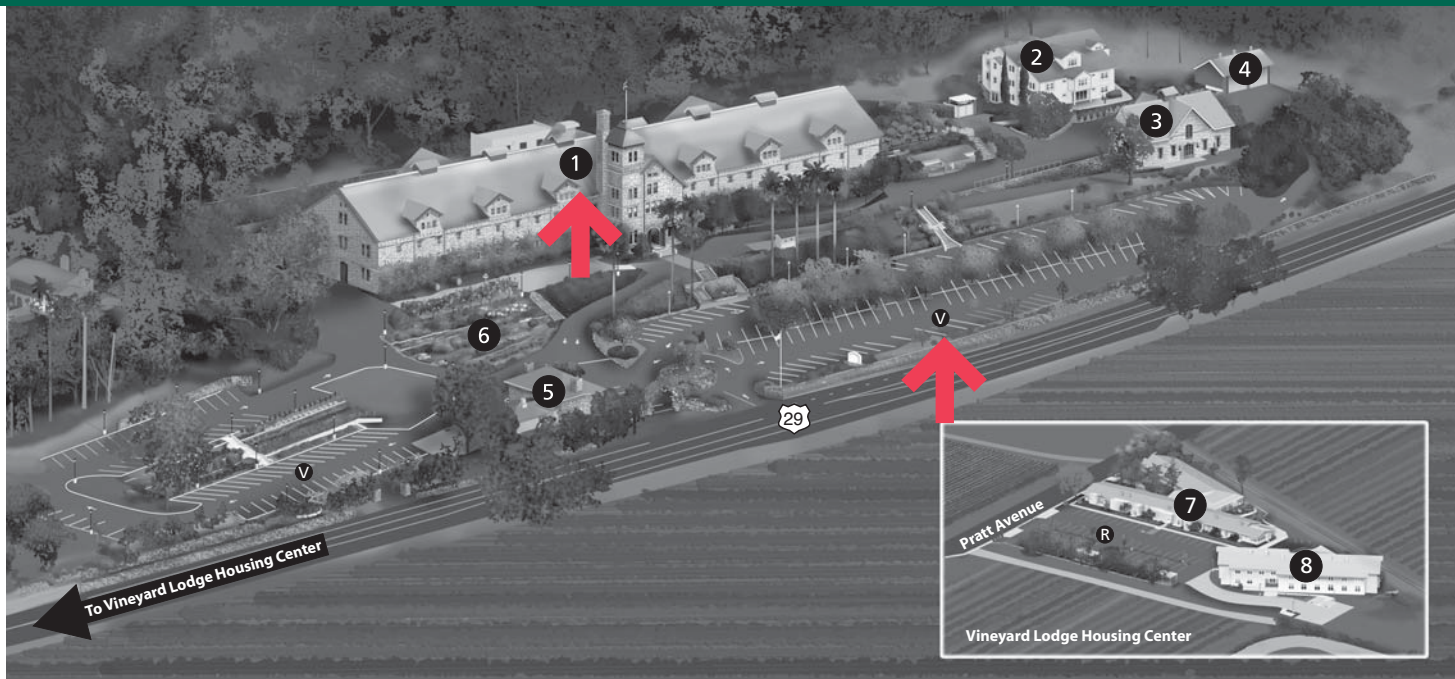
* There are accessible parking spaces available in other lots on campus as well, including the lot adjacent to the Continuing Education Center.

HYDE PARK, NY CAMPUS LOCATION

Travel Directions

For travel directions to the Hyde Park, NY campus, please visit www.ciachef.edu/visitors/hp/directions.





ST. HELENA, CA CAMPUS MAP

- 1 Historic Greystone Cellar Main Building**
- 2 Guest House Residence Hall
- 3 Rudd Center for Professional Wine Studies
- 4 Recycling and Biodiesel Plant
- 5 Williams Center for Flavor Discovery
- 6 Cannard Herb Garden
- 7 Vineyard Lodge I Residence Hall
- 8 Vineyard Lodge II Residence Hall
- V Visitor/Guest Parking**

Check-in will take place 30 minutes prior to the start time of your class. Please report to the concierge area in the Atrium on the first floor of the main building (**1 on the map**). Parking is available in the front of the Main Building (**V on the map**).

ST. HELENA, CA CAMPUS LOCATION

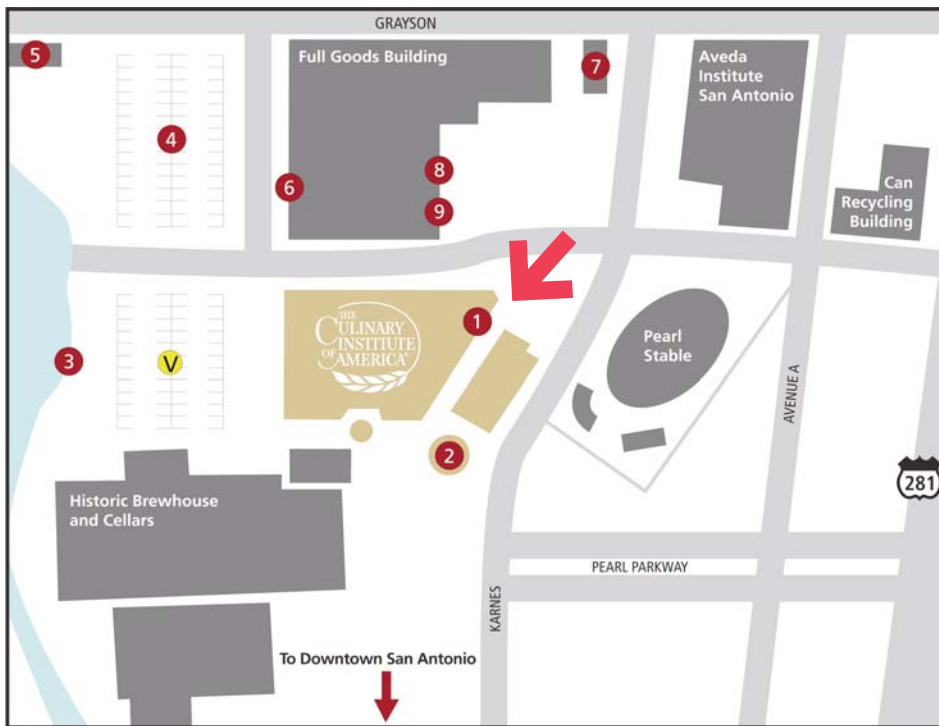
Travel Directions

For travel directions to the Greystone campus in St. Helena, CA, please visit www.ciachef.edu/visitors/gs/directions.

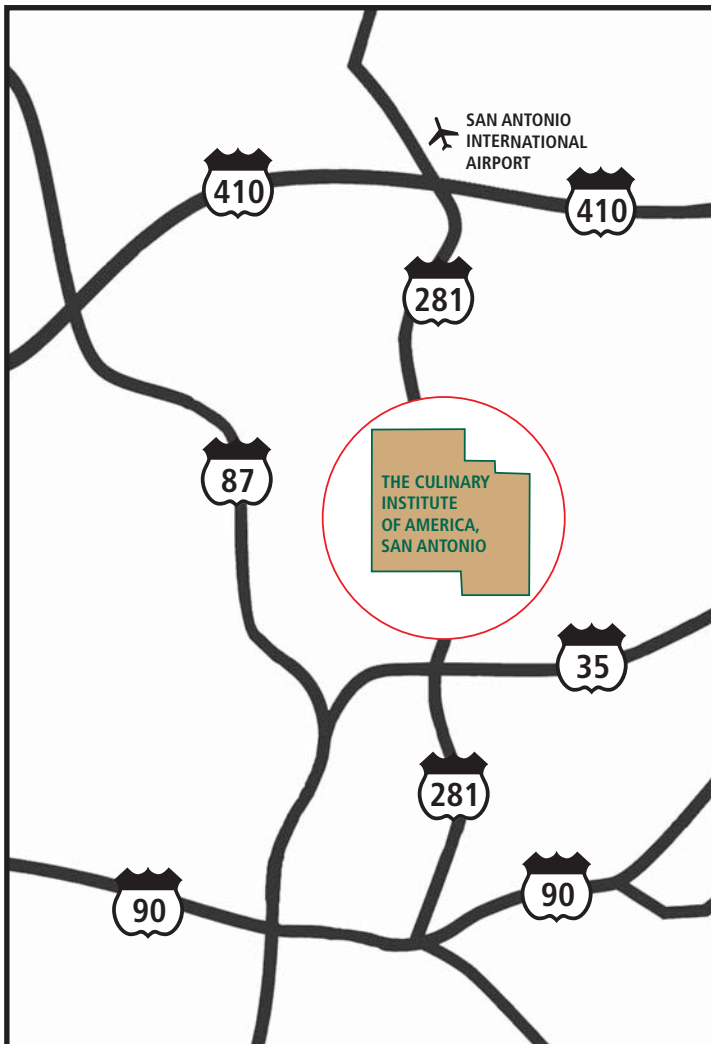


EXPLORE THE NAPA VALLEY

Are you planning to tack a few days onto your professional development experience and see more of the Napa Valley? Check out napavalley.com, a great resource for information about the region's vineyards, restaurants, lodging, spas, and more.



Check-in will take place 20 minutes prior to the start time of your program, in the reception area of the CIA San Antonio in Building 2 (1 on the map) on the Pearl Brewery site. Parking is available throughout the Pearl Brewery site.



SAN ANTONIO, TX CAMPUS MAP

1. **CIA San Antonio Main Building:**
CIA Bakery Café
Indoor Parking Garage
 2. Outdoor Kitchen, CIA San Antonio
 3. San Antonio River and River Walk
 4. Pearl Farmers Market
 5. La Gloria–Restaurant owned by CIA alumnus Johnny Hernandez '89
 6. Sandbar Fish House & Market–Restaurant owned by CIA alumnus Andrew Weissman '96
 7. il Sogno–Restaurant owned by CIA alumnus Andrew Weissman '96
 8. The Twig Book Shop–Offers CIA cookbooks and texts
 9. Melissa Guerra store–Offers CIA Masters Collection® cookware and CIA merchandise
- V Visitor/Guest Parking**

SAN ANTONIO, TX CAMPUS LOCATION

Travel Directions

For travel directions to the San Antonio, TX campus, please visit www.ciachef.edu/visitors/sanantonio/directions.asp.

The Culinary Institute of America
Continuing Education
1946 Campus Drive
Hyde Park, NY 12538-1499



©2011 The Culinary Institute of America | Photography: Roger Ball, Keith Ferris, Ben Fink, Chas McGrath, David Wakely, and Michael White
The CIA at Greystone and the CIA San Antonio are branches of the CIA, Hyde Park, NY.

The Culinary Institute of America
1946 Campus Drive
Hyde Park, NY
12538-1499

The Culinary Institute of America at Greystone
2555 Main Street
St. Helena, CA
94574

The Culinary Institute of America, San Antonio
312 Pearl Parkway
Building 2, Suite 2102
San Antonio, TX
78215

